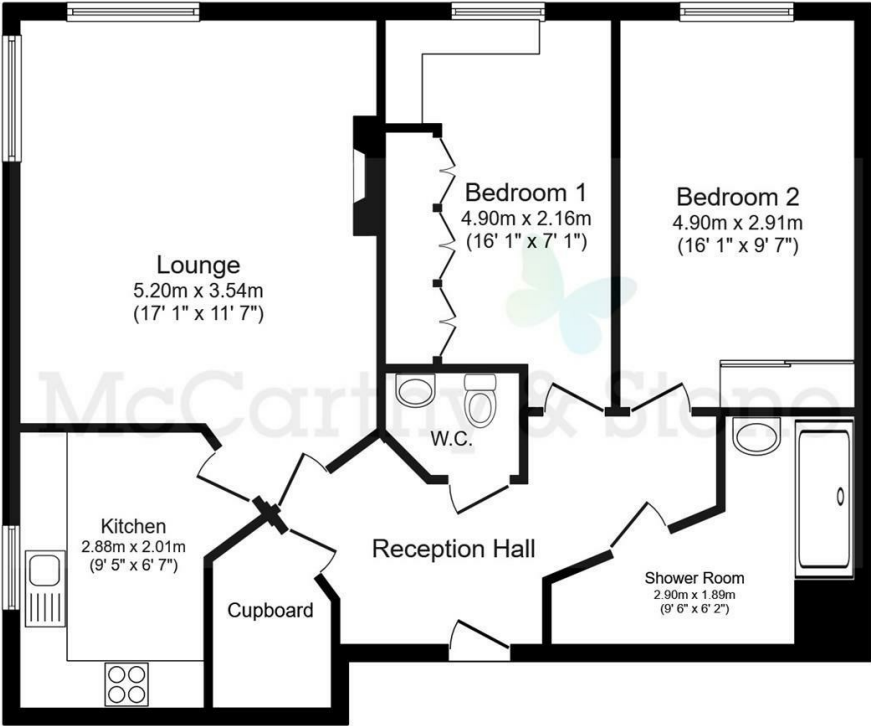


61 Jenner Court

St. Georges Road, Cheltenham, GL50 3ER



Printed Contact Details...  
This plan is for illustration purposes only and may not be representative of the property. Plan not to scale.

Powered by focalagent.com

Council Tax Band: C



Energy Efficiency Rating		
	Current	Potential
Very energy efficient - lower running costs		
(92 plus) A		
(81-91) B		
(69-80) C	78	78
(55-68) D		
(39-54) E		
(21-38) F		
(1-20) G		
Not energy efficient - higher running costs		
England & Wales	EU Directive 2002/91/EC	



Asking price £199,000 Leasehold

\*Join us for Coffee & Cake at our Open Day - Thursday 16th October 2025 - from 10am - 4pm - book your place today!\*

ENJOY LUNCH ON US WHEN YOU TAKE A TOUR OF JENNER COURT - BOOK NOW!

An excellent TWO BEDROOM DUAL ASPECT retirement apartment. ONE HOUR OF DOMESTIC ASSISTANCE INCLUDED PER WEEK.

Call us on 0345 556 4104 to find out more.

resales@mccarthyandstone.co.uk | mccarthyandstoneresales.co.uk

This floor plan is not drawn to scale and is for illustrative purposes only. Any measurements, floor areas (including any total floor area), openings and orientation are approximate and for guidance only. McCarthy Stone Resales do not take liability for any error, omission or misstatement. All parties must rely on their own inspections. It should not be assumed that any furniture or fittings contained in the photographs are included in any sale. All details referring to time and distances to localities are approximate. Details regarding any common charges and other applicable fees are provided by the seller and should not be relied on without verification and further checks made through a solicitor/conveyancer. Please contact the Property Consultant for further information that Appliances (including central heating) have not been tested, therefore it cannot be assumed that they are in good working order. All interested parties are advised to check availability and make an appointment before travelling to view the property to avoid disappointment or wasted time or travel expenses. The details contained within this brochure are for information purposes only and do not form part of any agreement. All purchases will be subject to contract terms. © All artwork (photos and floorplans) and written content are the sole property and copyright of McCarthy & Stone Resales Limited and are legally protected by UK & International copyright laws. Under no circumstance may you download, reproduce, publish or distribute any content for commercial purposes, without prior written permission from McCarthy Stone Resales. Unauthorised duplication or usage for commercial purposes is prohibited by the Copyright law and will be prosecuted.





# Jenner Court, St George's Rd, Cheltenham

## GL50 3ER

### Jenner Court

Located on St. George's Road, Jenner Court is less than a mile from the heart of Regency Cheltenham. There is a bus stop conveniently placed outside the front gates providing regular services into town. Within half a mile of Jenner Court, there's a Waitrose supermarket which also offers a home delivery service. Cheltenham has many well maintained gardens and its tree lined Promenade dating back to the 1790's, is home to many prestigious shops and stores. Jenner Court is one of McCarthy & Stone's Retirement Living PLUS range and can provide its homeowners' with additional care if required. An Estate Manager is on hand to supervise the day-to-day running of the development and attend to any queries. Within the service charge homeowners are allocated 1 hour of domestic assistance per week, however, additional hours can be arranged. A range of optional personal care packages, provided by the on-site CQC registered care agency team, can be personalised to your specific needs. The development has 24-Hour on-site staffing and a secure camera entry system. Each homeowner has access to a 24-Hour emergency call system via a personal pendant and static call points in their bathroom and bedroom. There is a homeowners' lounge with audio visual equipment and WiFi. It is a superb venue for socialising with friends and family and if your guests have travelled from afar, they can extend their stay by booking (subject to availability) into the development's Guest Suite which has an en-suite shower room, tea and coffee making facilities and a TV. An on-site waitress service restaurant provides freshly cooked meals every day.

### The Apartment

The apartment is conveniently located very close to the lift which gives easy access to all the developments amenities whilst maintaining a very quiet and private position. For further convenience, the apartment has a very useful cloakroom WC which is unique for the development whilst other two bed apartments do not have this luxury.

Viewing is highly recommended to truly appreciate this apartment and its fantastic features.

### Entrance Hallway

The front door with a spy hole leads to a spacious entrance hall

where the 24-hour Tunstall emergency response system, smoke detector and secure door entry system are situated. From the hallway there is a door to a storage/airing cupboard and doors to the living room, bedrooms and bathroom and separate cloakroom

### Living room

A lovely bright and spacious dual aspect room with triple glazed windows providing a great outlook. There is also a feature fireplace with inset electric fire creating a nice cosy focal point. TV point, Sky+ connectivity, telephone point, two ceiling lights, raised electric power sockets and an oak effect partially glazed door leads off to a separate kitchen.

### Kitchen

A modern fitted kitchen with a range of wall and base units, under-counter lighting, roll edge work surfaces and a tiled splash back. The kitchen has an integrated fridge, integrated freezer, built-in electric oven and a ceramic four ringed hob with extractor hood. A stainless steel sink and drainer is positioned in front of an electrically operated triple glazed window.

### Main Bedroom

The large double bedroom has a built-in wardrobe with sliding mirror doors. Large windows that allow in plenty of light and offering a very pleasant outlook. The bedroom has a central ceiling light, TV and telephone point, raised power sockets and an emergency pull-cord.

### Shower room

This purpose built wet room with slip-resistant flooring comprises a low level bath with grab rails, vanity unit, wash hand basin with mirror over, WC, bath, and shower unit.

### Bedroom two

Second double bedroom with a triple glazed window and a very pleasant outlook. The bedroom has fitted wardrobes a central ceiling light, TV and telephone point and raised power sockets.

### WC

WC off the hallway with wash hand basin with mirror over. Tiled flooring

## 2 bed | £199,000

### Service charge details

Service Charge details:

- 24-Hour on-site staffing
- 1 hour of domestic assistance per week
- Cleaning of communal windows
- Water rates for communal areas and apartments
- Electricity, heating, lighting and power to communal areas
- 24 hour emergency call system
- Upkeep of gardens and grounds
- Repairs and maintenance to the interior and exterior communal areas
- Contingency fund including internal and external redecoration of communal areas
- Buildings insurance

Annual Service charge: £12,938.06 for financial year ending 31/03/2026. The service charge does not cover external costs such as your Council Tax, electricity or TV. To find out more about the service charges please please contact your Property Consultant or Estate Manager.

### Lease Information

Age requirement - 70 years of age or over

Lease - 125 years from 1st June 2013

Ground rent: £510 per annum

Ground rent review: 1st June 2028

### Parking

Parking is allocated, on a first come first served basis. Please check with the House Manager on site for availability. Annual fee - £250

### Additional Information & Services

- Superfast Fibre Broadband available
- Mains water and electricity
- Electric room heating
- Mains drainage

